

DIRECTV Home Media Center (HMC) DVR

Model number: HR34



Image for illustrative purposes only.

CONSUMER POSITIONING

DIRECTV's all new Home Media Center HD DVR finally eliminates recording conflicts. You can record up to 5 shows at once with one central DVR, and then watch them in any room of your house. Plus, with 800 hours of storage, you won't have to delete your favorite shows again.

- Now record 5 shows in HD at once, all with one central DVR. No more recording conflicts!
- Watch your favorite recorded shows in any room of the house.
- With 800 hours of storage, you can record up to 1,600 shows.
Actual recording capacity varies based on type of programming being recorded and based on SD programming.
- DIRECTV has the largest recording capacity in the industry, more than twice the storage capacity of cable.

FEATURES	BENEFITS
5 Tuners	<ul style="list-style-type: none">■ Record up to 5 programs at the same time■ Provides DIRECTV Whole-Home DVR Service in 4 active rooms (Limit three [3] remote viewings at a time)■ Record and delete shows from every connected TV/HD Receiver■ Watch recorded shows on every TV Client/HD Receiver■ Watch the recorded program on more than one TV Client/HD Receiver simultaneously (Limit three [3] remote viewings at a time)■ Record and download DoD programs on every TV Client/HD Receiver
Picture-in-Picture	<ul style="list-style-type: none">■ Watch 2 shows at once without having to change channels <small>Note: This feature is only available on the TV connected directly to the Home Media Center HD DVR.</small>
1TB of Storage	<ul style="list-style-type: none">■ Store Up To 200 hours of HD programming■ With 800 hours of SD storage, you can record up to 1,600 shows <small>Actual recording capacity varies based on type of programming being recorded and based on SD programming.</small>
DIRECTV RVU Technology	<ul style="list-style-type: none">■ Connect up to 8 RVU TVs to a single HMC<ul style="list-style-type: none">• Samsung 6000, 6400 and 6420 model TVs• Only 4 may actively view programming at the same time (Limit three [3] remote viewings at a time)■ Saves money by eliminating the need for additional DIRECTV receivers

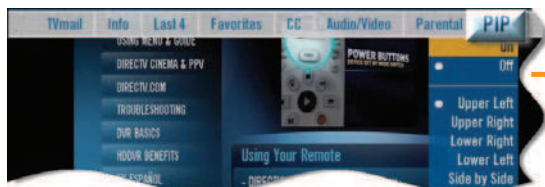
MORE DETAILS ON BACK.

DIRECTV HMC

Picture in Picture (PiP) Activation Screens

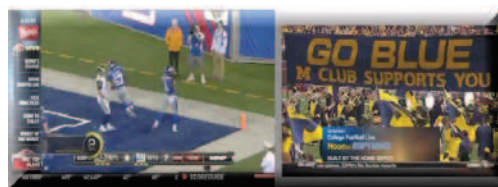
Since this is a multiple-tuner receiver, you have the options to activate PiP. To turn on PiP:

1. Press the Yellow remote key to select TV Options
2. Activate PiP and select the PiP screen position



Picture in Picture (PiP) Switch Screens

1. Press the Down Arrow key to switch between active PiP screens



GENERAL

Product	Model	DIRECTV HR34
	Brand	DIRECTV
	Name	HR34 HD DVR
Receiver	Width	15.75"
	Height	3.25"
	Depth	11.85"
Carton	Width	18.59"
	Height	4.81"
	Depth	15.67"
Tuners	Satellite	7
Decoding	MPEG4	

INPUTS/OUTPUTS

Video Outputs	HDMI	1
	Component	1
	NTSC S-Video	1
	Composite	1 (Audio LR)
Audio Outputs	Digital (Optical)	1
	Digital (Coaxial)	1
	Stereo	1 (L/R, RCA)
	S/PDIF(COAX)	1
Other	Satellite IN	1
	F-connector	
	Internal RF antenna	1
	Front USB 2.0	1 (Type A)
	Back USB 2.0	1 (Type A)
	Ethernet	1 (RJ-45)
	eSATA Port	1
	Phone Jack	1
	AC Power Inlet	1
	Connector	

BOX CONTENTS

Cables	HDMI
	Component (YPbPr)
	A/V (RCA)
Other	Access Card
	Phone cord
	Power cord
Remote	Model HR34
	IR Capable
	RF Capable
	4 Position Switch: DIRECTV Receiver, TV, AV1, AV2
	Programmable to DIRECTV, TV, STB, DVD, VCR, Stereo
	Batteries Included (2 AA)

OTHER FEATURES

- Record 5 shows at one with one DVR
- Playlist sharing with HD boxes
- Pause and rewind live TV in all rooms
- Stream 3 recordings to secondary rooms
- On HD boxes only:
 - Manage recordings in all rooms
 - New generation UI in all rooms
 - Connected home benefits in all rooms

To access DIRECTV HD programming, HD equipment and access fee required.



HOME MEDIA CENTER requires a DIRECTV Plus HD DVR model HR34 receiver. Remote viewing requires a model H25 HD Receiver(s) or RVU-capable TV in each additional room, a SWiM network, HD Access, DVR service and DIRECTV Whole-Home DVR service. There is a limit of one remote viewing per DVR at a time. For Whole-Home DVR to function, your receivers should never have an Ethernet cable connected, unless it is connected to a DECA. H24 and HR24 receivers should never have a DECA installed. Also requires HD Access (\$10/mo.), DVR Service (\$7/mo.) and DIRECTV and Whole-Home service (\$3/mo.).